



How to - Heated Handlebar Grip Installation

This guide outlines the installation of heated handlebar grips on a Ural motorcycle.

Written By: David



INTRODUCTION

This guide outlines the installation of heated handlebar grips on a Ural motorcycle.

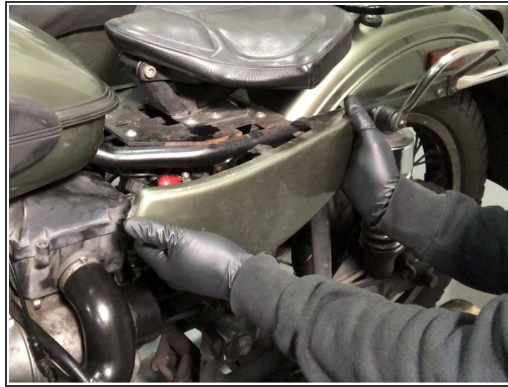
TOOLS:

- **Phillips Screwdriver** (1)
Throttle/switch control housing
- **Diagonal Cutting Pliers** (1)
- **Slip Joint Pliers** (1)
- **5mm Hex Key** (1)
Headlight depending on year
- **8mm Wrench** (1)
Throttle adjuster
- **10mm Wrench** (1)
Throttle adjuster
- **13mm Wrench** (1)
Headlight depending on year

PARTS:

- **Heat Resistant Adhesive** (1)
Handlebar grips
- **Cable Tie** (4)
Optional

Step 1 — How to - Heated Handlebar Grip Installation



- ⓘ Your package includes one (1) left and one (1) right heated handlebar grip, two (2) plastic handlebar end caps, wiring harness extension for both positive (+) and negative (-) wire leads, two (2) wire splice connectors and two (2) cable ties.
 - ⓘ Additionally you will need high temperature handlebar grip adhesive or equivalent (not included) and you may want to have more cable ties, an assortment of electrical connectors and electrical tape on hand for more options when installing on your particular motorcycle.
- To start remove the left side panel.
 - Disconnect the battery.

Step 2



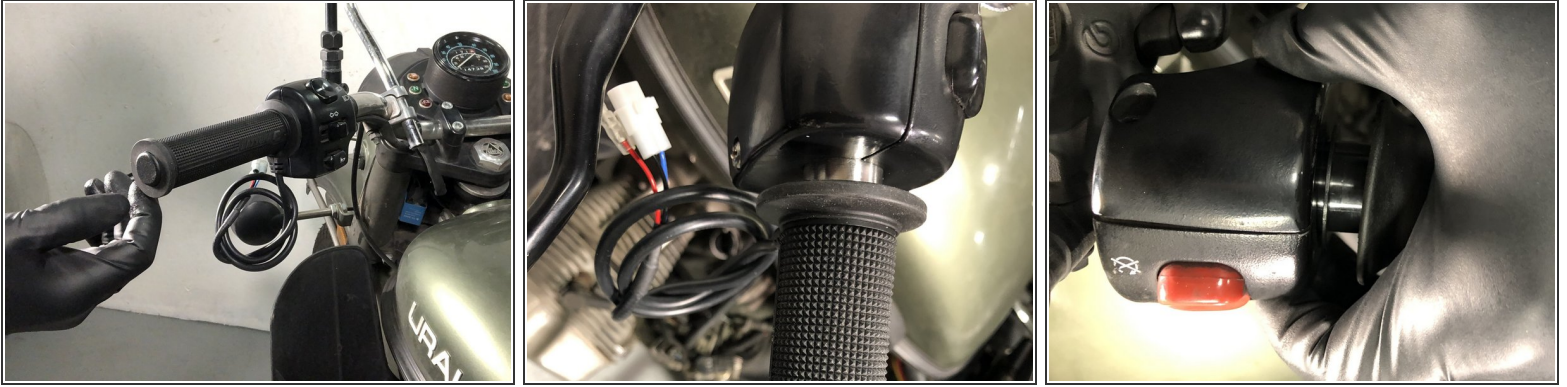
- Remove left handlebar grip.
- If required remove old handlebar grip adhesive, scale, rust or debris.
- Wipe thoroughly with an appropriate cleaner to allow maximum adhesion when new handlebar grip adhesive is applied.

Step 3



- Apply heat resistant handlebar grip adhesive or equivalent.
- Slide the heated grip with on/off temperature controller onto the handlebar. Center the electrical connector lead facing down so it is out of the way when routed and secured to the handlebar.
- ⓘ Slide the grip into position stopping when the end of the grip is flush with the end of the handlebar.
- ⚠ DO NOT cut, bend, twist or hit the grips to install. Applying firm pressure and sliding the grips into position is usually sufficient.
- Install handlebar end cap.

Step 4



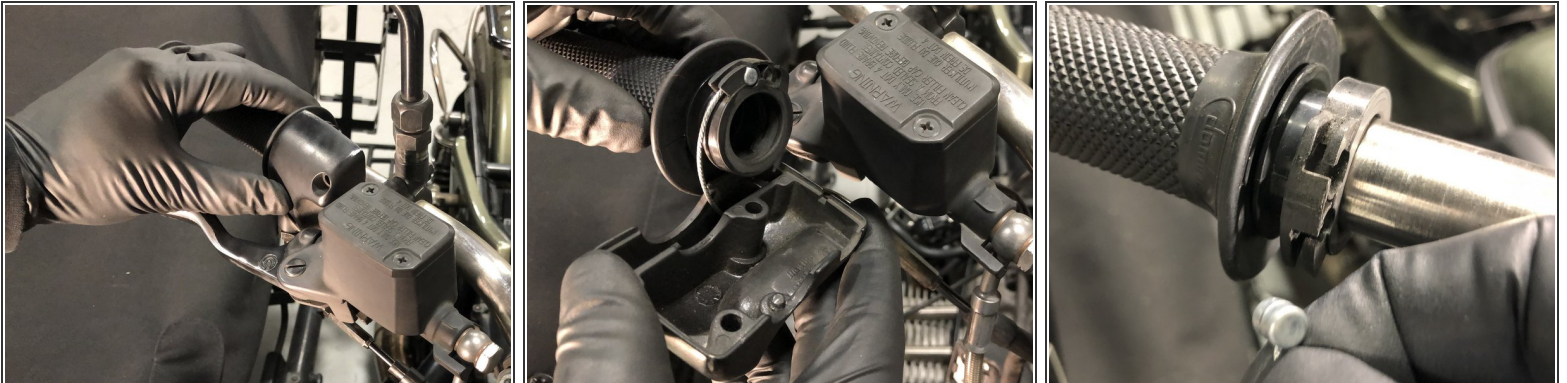
- ☞ When the grip is flush with the end of the handlebar and the end cap is in place you will notice there is a gap between the grip and the switch control housing. This is normal and cannot be avoided, the heated grip length is slightly shorter than stock grips.
- ⓘ **Option 1:** Remove 10mm (0.39") from the left and right sides of the handlebar and the throttle tube to eliminate the gap.
- ☞ The left switch control housing can be moved to close the gap, the right side does not offer this option as there is a locating pin cast into the right throttle/switch control housing that aligns with a hole in the handlebar.
- ⓘ **Option 2:** Leave an equal gap (as shown in this guide) between the left switch and right throttle/switch control housings and the grips, keeping the end of the grips flush with the handlebar.

Step 5



- Slide the protective rubber cover down the throttle cable to expose the throttle cable adjuster.
- Loosen the throttle cable jam nut, close/shorten the adjuster to give the throttle cable slack.
- Remove the two screws that secure the right throttle/switch control housing to the handlebars.

Step 6



- Separate the two halves of the throttle/switch housing and remove the throttle cable from the throttle sleeve.

Step 7



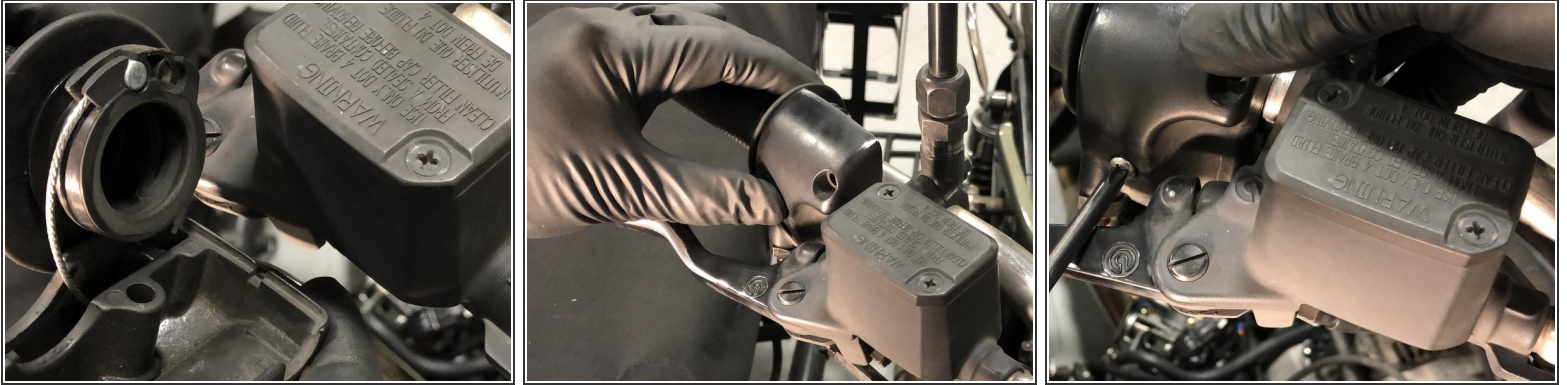
- Remove the right handlebar grip from the throttle tube.
- Wipe thoroughly with an appropriate cleaner to allow maximum adhesion when new handlebar grip adhesive is applied.

Step 8



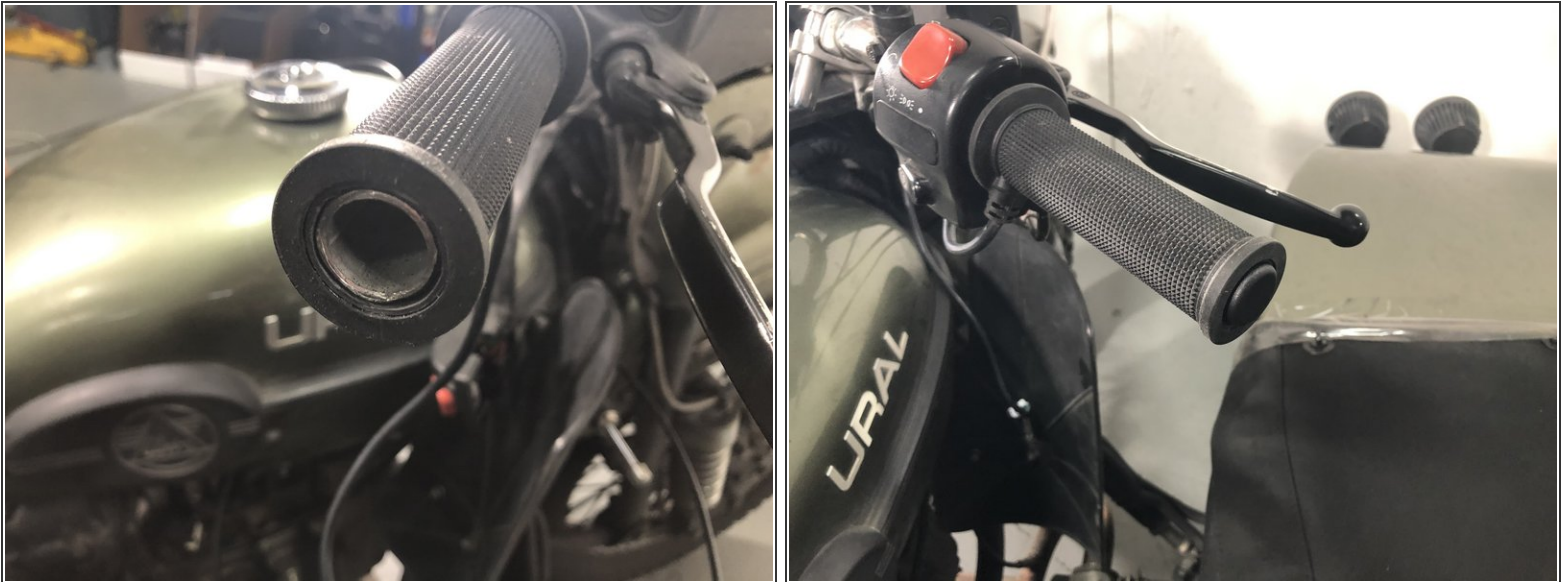
- Apply heat resistant handlebar grip adhesive or equivalent.
 - ⓘ Fixing the grip on the throttle tube in the correct position is critical. As throttle is applied there must be adequate slack in the electrical connector lead on the heated grip to allow rotation of the throttle tube without obstruction when the electrical connector lead is routed and secured to the handlebar.
- Slide the heated grip onto the throttle tube. Center the electrical connector lead 180° (degrees) from the throttle cable ferrule mounting location.
 - ⓘ Slide the grip into position stopping when the end of the grip is flush with the end of the throttle tube.
 - ⚠ DO NOT cut, bend, twist or hit the grips to install. Applying firm pressure and sliding the grips into position is usually sufficient.

Step 9

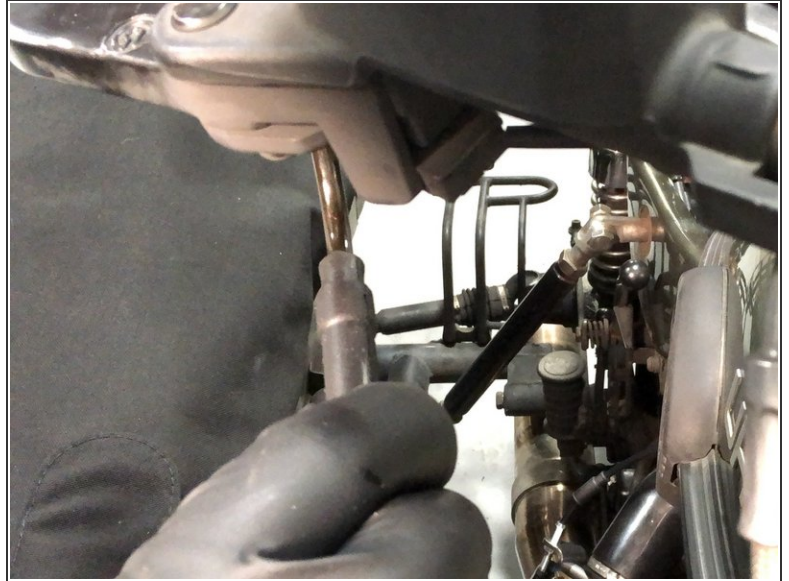


- Slide the throttle sleeve into position over the handlebar.
- Install the throttle cable into the throttle sleeve.
- Install the two (2) halves of the throttle/switch housing and secure with the original screws.

Step 10



- ⓘ When installed the heated grip and throttle tube assembly should be flush with the end of the handlebar.
- Install handlebar end cap.

Step 11

- Adjust throttle cable free play at the throttle grip.
- Slide the protective rubber boot into place over the throttle cable adjuster.

Step 12



- Remove the hardware securing the headlight assembly.
- ⓘ The tools required to remove the headlight assembly will differ depending on the date of manufacture.
- Disconnect the headlight connector and place the assembly out of the way.

Step 13



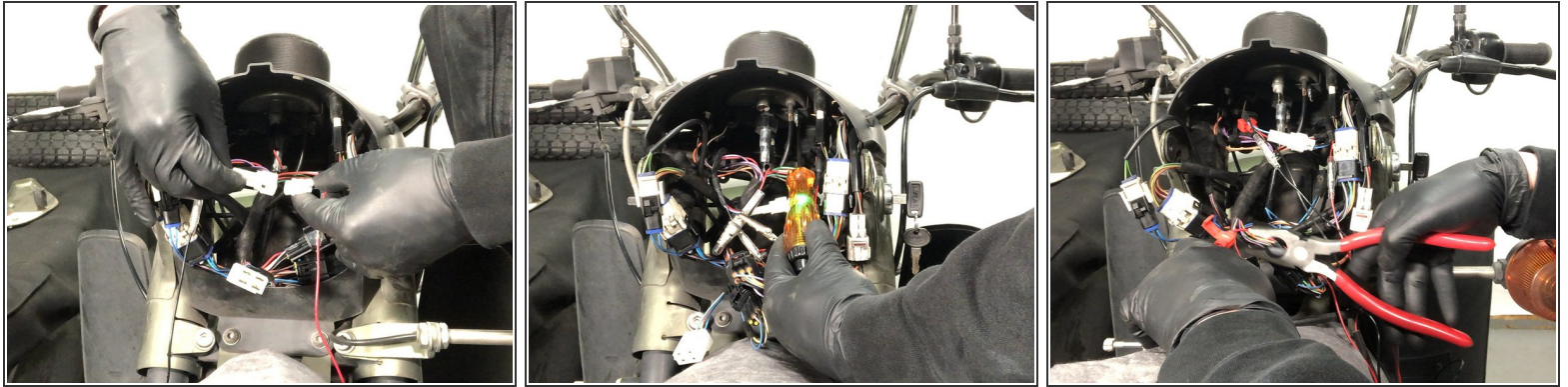
- Connect the red wire lead with fuse holder to the red wire on the left heated grip.
- Route the left wire harness along the handlebar following the same path as the existing left switch control harness.
- Secure with cable ties

Step 14



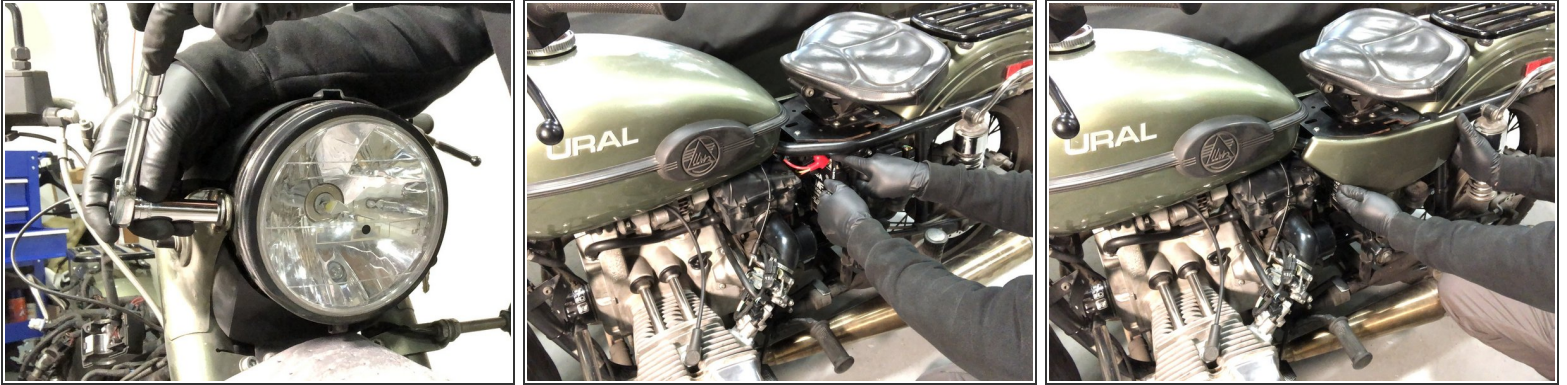
- Connect the black wire lead to the black wire on the right heated grip.
 - Route the right wire harness along the handlebar following the same path as the existing right throttle/switch control harness.
- ⚠** For the right throttle side, it is critical that extra slack is left to allow the throttle to rotate without obstruction.
- Secure with cable ties.

Step 15



- Connect the left and right wire harnesses from both heated grips together.
- Use a test light to determine a suitable keyed "ON" power source for the red positive (+) wire lead with inline fuse to splice into.
 - ⚠ Confirm this power source is only energized when the key is in the "ON" position.
- Use the provided wire splice connectors or other suitable method to make the connection.
- Repeat for the black ground/negative (-) wire lead.

Step 16



- Plug in the headlight at the connector.

⚠ Arrange all wiring behind the headlight assembly in a manner that prevents the wires from arching, becoming pinched, stretched or become disconnected during complete side to side full arcing movement of the forks.

- Install headlight assembly using original hardware.
- Connect battery.
- Replace side cover.

Step 17



- Confirm electrical function with the ignition key to the "ON" position.
- Press and hold the button on the left heated grip until the red indicator begins to flash.
- Toggle through the setting to ensure full function.
- Press and hold the button on the left heated grip once more to turn off.
- Turn the ignition key to the "OFF" position.